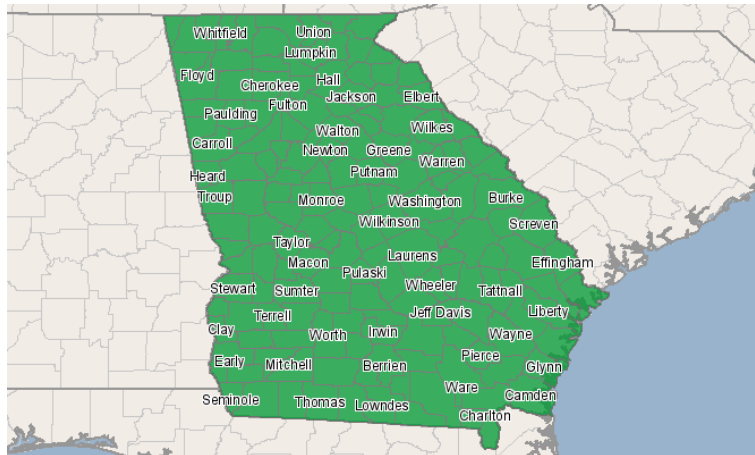


Technical College System of Georgia



1800 Century Place
Atlanta, Georgia 30345
404.679.1600

Occupation Report



Region Info

Region: Georgia

State Area: Georgia

Executive Summary

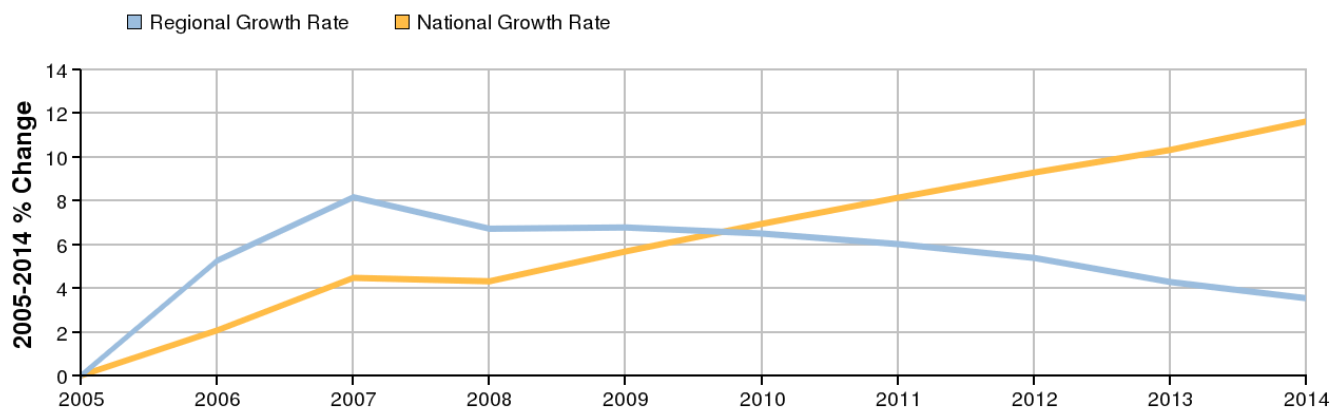
Selected Occupations	Education Level
Avionics technicians (SOC 49-2091)	Postsecondary vocational award

Basic Information	
2005 Occupational Jobs	694
2014 Occupational Jobs	718
Total Change	24
Total % Change	3.46%
2007 Median Hourly Earnings	\$28.83

Economic Indicators	
2005 Location Quotient	1.33
2014 Location Quotient	1.21

Source: EMSI Complete Employment - Fall 2008

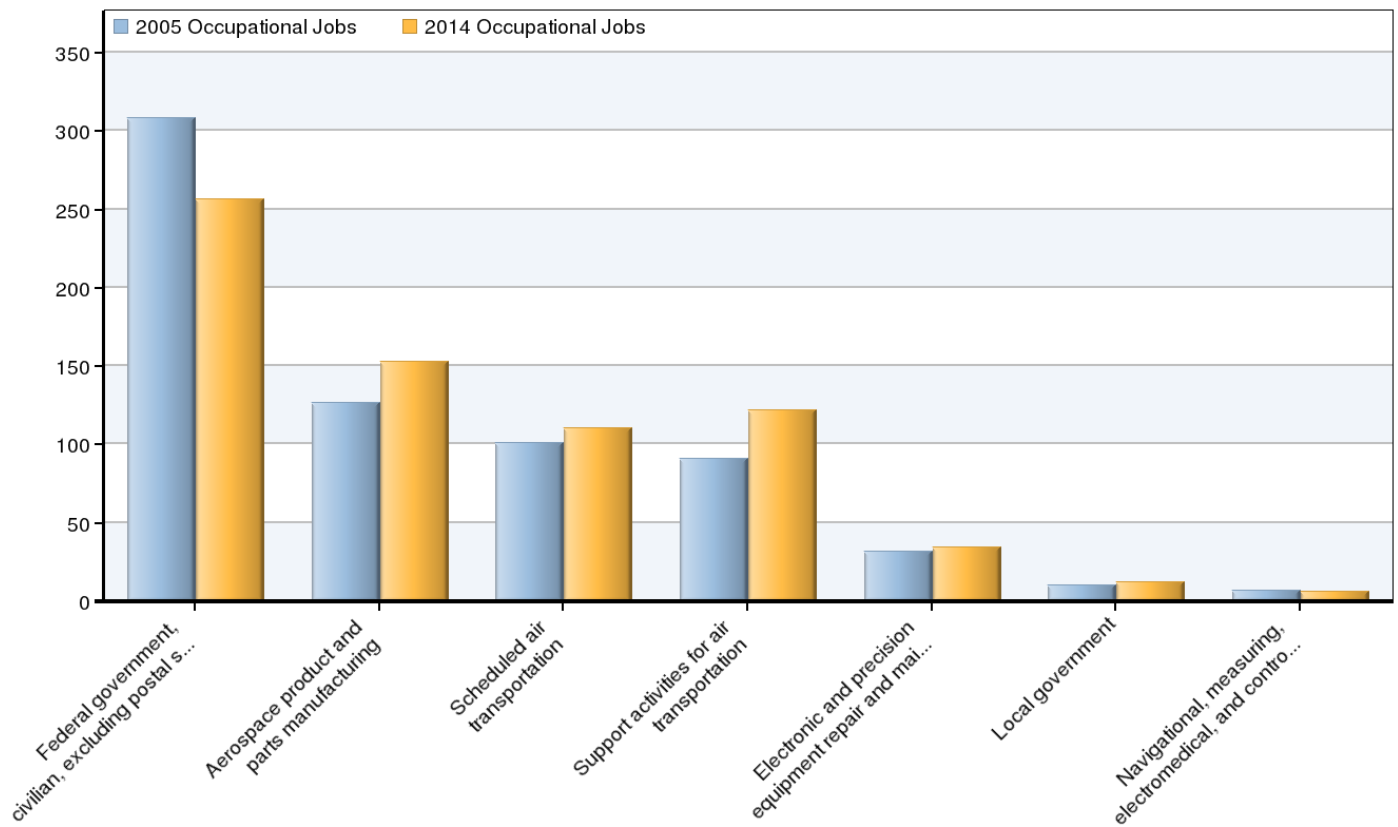
Occupational Change Summary



Region	2005 Jobs	2014 Jobs	Change	% Change	2007 Median Hourly Earnings
Regional Total	694	718	24	3%	\$28.83
National Total	17,310	19,321	2,011	12%	\$23.12

Source: EMSI Complete Employment - Fall 2008

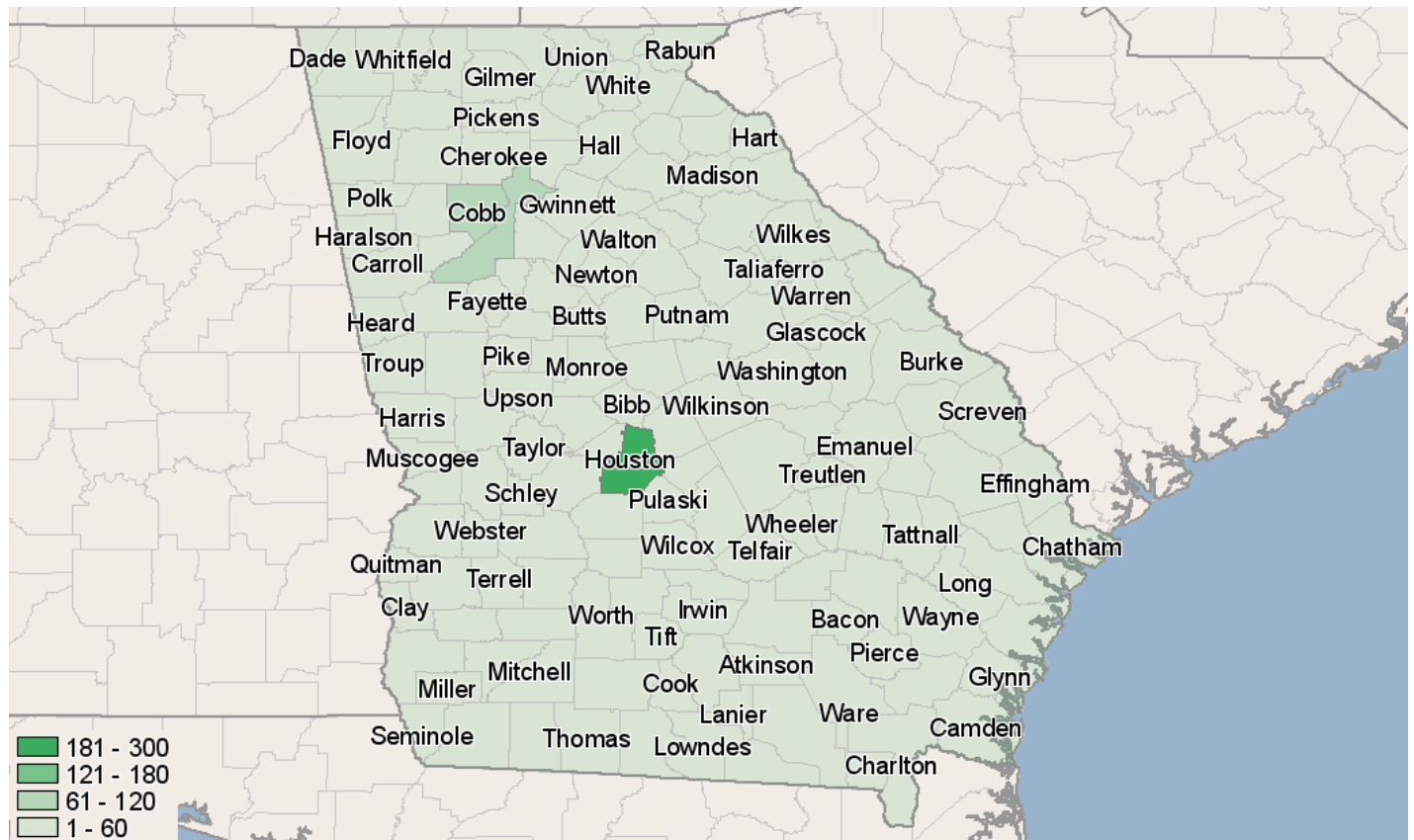
Top Industries for Selected Occupation



NAICS Code	Name	2005 Jobs	2014 Jobs	Change	% Change
911000	Federal government, civilian, excluding postal service	308	256	-52	-17%
336400	Aerospace product and parts manufacturing	127	153	26	21%
481100	Scheduled air transportation	101	110	9	9%
488100	Support activities for air transportation	91	122	31	34%
811200	Electronic and precision equipment repair and maintenance	32	34	2	6%
930000	Local government	10	12	2	20%
334500	Navigational, measuring, electromedical, and control instruments manufacturing	7	6	-1	-14%

Source: EMSI Complete Employment - Fall 2008

Occupation Distribution



County	2005 Jobs
Houston, GA (13153)	228
Fulton, GA (13121)	84
Cobb, GA (13067)	63
Clayton, GA (13063)	58
Chatham, GA (13051)	34
Richmond, GA (13245)	32
Muscogee, GA (13215)	24
Dougherty, GA (13095)	19
DeKalb, GA (13089)	17
Clarke, GA (13059)	16
Bibb, GA (13021)	15
Liberty, GA (13179)	<10
Gwinnett, GA (13135)	<10
Lowndes, GA (13185)	<10
Camden, GA (13039)	<10
Baldwin, GA (13009)	<10
Floyd, GA (13115)	<10
Coffee, GA (13069)	<10
Thomas, GA (13275)	<10
Bulloch, GA (13031)	<10
Fayette, GA (13113)	<10
Hall, GA (13139)	<10
Carroll, GA (13045)	<10
Jackson, GA (13157)	<10
Walker, GA (13295)	<10
Colquitt, GA (13071)	<10

Coweta, GA (13077)	<10
Laurens, GA (13175)	<10
Polk, GA (13233)	<10
Elbert, GA (13105)	<10
Gordon, GA (13129)	<10
Habersham, GA (13137)	<10
Rabun, GA (13241)	<10
Whitfield, GA (13313)	<10
Henry, GA (13151)	<10
Hart, GA (13147)	<10
McDuffie, GA (13189)	<10
Glynn, GA (13127)	<10
Wilkes, GA (13317)	<10
Gilmer, GA (13123)	<10
Bartow, GA (13015)	<10
White, GA (13311)	<10
Catoosa, GA (13047)	<10
Douglas, GA (13097)	<10
Spalding, GA (13255)	<10
Lumpkin, GA (13187)	<10
Oconee, GA (13219)	<10
Stephens, GA (13257)	<10
Cherokee, GA (13057)	<10
Union, GA (13291)	<10
Washington, GA (13303)	<10
Emanuel, GA (13107)	<10
Terrell, GA (13273)	<10
Fannin, GA (13111)	<10
Columbia, GA (13073)	<10
Ben Hill, GA (13017)	<10
Wayne, GA (13305)	<10
Dodge, GA (13091)	<10
Barrow, GA (13013)	<10
Toombs, GA (13279)	<10
Early, GA (13099)	<10
Greene, GA (13133)	<10
Rockdale, GA (13247)	<10
Tift, GA (13277)	<10
Murray, GA (13213)	<10
Oglethorpe, GA (13221)	<10
Troup, GA (13285)	<10
Evans, GA (13109)	<10
Jefferson, GA (13163)	
Chattahoochee, GA (13053)	
Forsyth, GA (13117)	
Morgan, GA (13211)	
Madison, GA (13195)	
Candler, GA (13043)	
Franklin, GA (13119)	
Chattooga, GA (13055)	
Decatur, GA (13087)	
Screven, GA (13251)	
Sumter, GA (13261)	
Paulding, GA (13223)	

Towns, GA (13281)	
Banks, GA (13011)	
Burke, GA (13033)	
Newton, GA (13217)	
Worth, GA (13321)	
Ware, GA (13299)	
Peach, GA (13225)	
Lee, GA (13177)	
Jenkins, GA (13165)	
Tattnall, GA (13267)	
Montgomery, GA (13209)	
Brooks, GA (13027)	
Pickens, GA (13227)	
Effingham, GA (13103)	
Taylor, GA (13269)	
Walton, GA (13297)	
Grady, GA (13131)	
Crawford, GA (13079)	
Bryan, GA (13029)	
Dade, GA (13083)	
Jeff Davis, GA (13161)	
Mitchell, GA (13205)	
Pike, GA (13231)	
Marion, GA (13197)	
Cook, GA (13075)	
Clay, GA (13061)	
Harris, GA (13145)	
Appling, GA (13001)	
Putnam, GA (13237)	
Charlton, GA (13049)	
Johnson, GA (13167)	
Hancock, GA (13141)	
Lanier, GA (13173)	
Monroe, GA (13207)	
Meriwether, GA (13199)	
Pierce, GA (13229)	
Jones, GA (13169)	
Wheeler, GA (13309)	
Lincoln, GA (13181)	
Miller, GA (13201)	
Treutlen, GA (13283)	
Baker, GA (13007)	
Haralson, GA (13143)	
Dooly, GA (13093)	
Crisp, GA (13081)	
Irwin, GA (13155)	
Turner, GA (13287)	
Webster, GA (13307)	
Telfair, GA (13271)	
Berrien, GA (13019)	
Calhoun, GA (13037)	
Randolph, GA (13243)	
Bacon, GA (13005)	
Warren, GA (13301)	

Butts, GA (13035)	
Lamar, GA (13171)	
McIntosh, GA (13191)	
Bleckley, GA (13023)	
Dawson, GA (13085)	
Upson, GA (13293)	
Macon, GA (13193)	
Taliaferro, GA (13265)	
Glascock, GA (13125)	
Atkinson, GA (13003)	
Wilcox, GA (13315)	
Echols, GA (13101)	
Jasper, GA (13159)	
Long, GA (13183)	
Twiggs, GA (13289)	
Seminole, GA (13253)	
Heard, GA (13149)	
Pulaski, GA (13235)	
Brantley, GA (13025)	
Clinch, GA (13065)	
Wilkinson, GA (13319)	
Schley, GA (13249)	
Stewart, GA (13259)	
Talbot, GA (13263)	
Quitman, GA (13239)	<10

Source: EMSI Complete Employment - Fall 2008

Data Sources and Calculations

Industry Data

In order to capture a complete picture of industry employment, EMSI basically combines covered employment data from Quarterly Census of Employment and Wages (QCEW) produced by the Department of Labor with total employment data in Regional Economic Information System (REIS) published by the Bureau of Economic Analysis (BEA), augmented with County Business Patterns (CBP) and Nonemployer Statistics (NES) published by the U.S. Census Bureau. Projections are based on the latest available EMSI industry data, 15-year past local trends in each industry, growth rates in statewide and (where available) sub-state area industry projections published by individual state agencies, and (in part) growth rates in national projections from the Bureau of Labor Statistics.

Occupation Data

Organizing regional employment information by occupation provides a workforce-oriented view of the regional economy. EMSI's occupation data are based on EMSI's industry data and regional staffing patterns taken from the Occupational Employment Statistics program (U.S. Bureau of Labor Statistics). Wage information is partially derived from the American Community Survey. The occupation-to-program (SOC-to-CIP) crosswalk is based on one from the U.S. Department of Education, with customizations by EMSI.

State Data Sources

This report uses state data from the following agencies: Georgia Department of Labor, Workforce Information and Analysis, Occupational Information Services Unit.